

Resource Consents

PF Olsen Group Scheme FSC SW-FM/COC-000190 and PF Olsen West Coast Forests FSC SGS-FM/COC-000763

Consents listed are those held for all forests managed by PF Olsen Ltd over the year ending 30 June 2011 as categorised by status at year end. There are 231 active consents in total with 6 due to expire shortly.

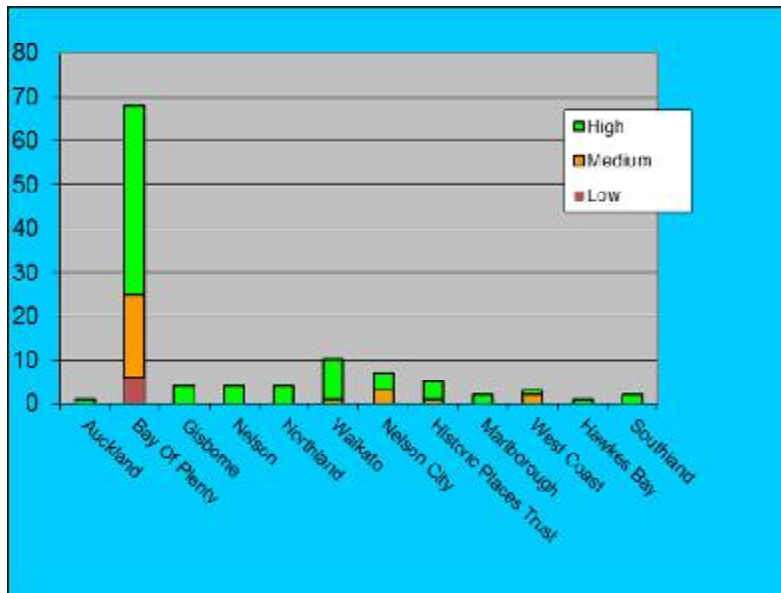
Authority	Current	Due to Expire	Grand Total
Auckland	3		3
Bay Of Plenty	47		47
Canterbury	9		9
Department of Conservation	1		1
Dunedin City	1		1
Far North	1		1
Gisborne	22	1	23
Grey	1		1
Hawkes Bay	1		1
Historic Places Trust	26	2	28
Marlborough	11	1	12
Nelson	2		2
Nelson City	1		1
Northland	4		4
Opotiki	1		1
Selwyn	3		3
Soil Conservation Area	2		2
Southland	6	1	7
Waikato	7		7
Waipa	1		1
Wellington	7		7
West Coast	63	1	64
Western Bay of Plenty	1		1
Whangarei	1		1
Grand Total	225	6	231

PF Olsen Ltd have continued to record consent compliance as determined from Regulatory Authority Consents Officers' Inspection Reports. Different authority's record their inspections to different formats thus the classification used involves some interpretation. Nevertheless the data provides some indication of compliance ranking and is monitored over time. Some Regulatory Authorities undertake relatively little or no compliance monitoring thus are not represented or well represented in these statistics.

The cumulative results for all of PF Olsen Ltd are graphed below for the year through to June 2011, a total of 99 audits. Non-compliance is recognised as an environmental incident. Audits of work related to archaeological authorities recorded 2 "high compliance" ratings, but are not included in the graphical representations below.

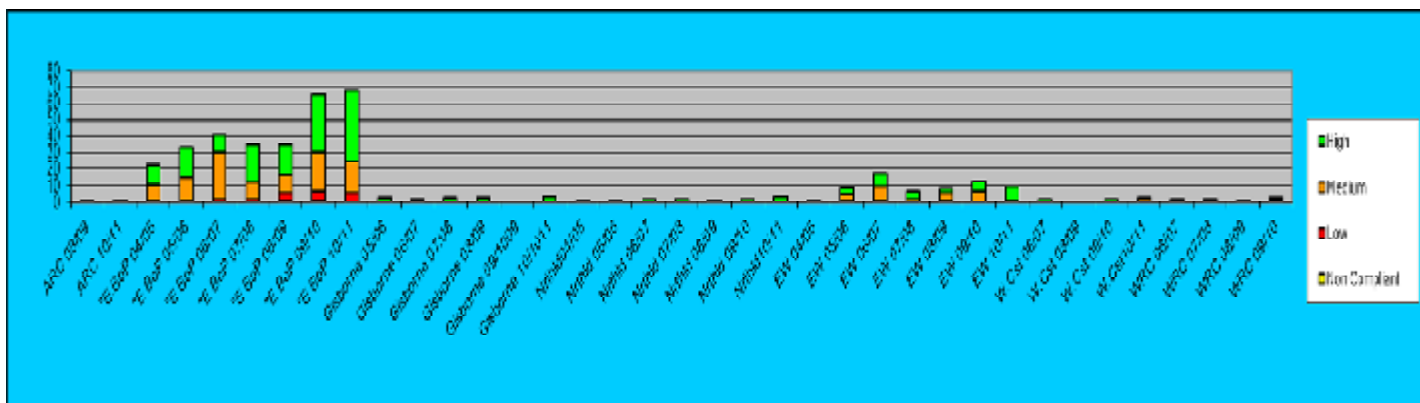
Continued on next page...

...continued



The time series of consent monitoring results now covering the period July 2004 to June 2010 are illustrated below.

The imperative remains to eliminate all non & low compliance and improve high vs. medium ratios. A number of initiatives from planning and systems changes through to training have been or are being initiated to manage the root contributing factors to these difficulties.



Over the full period, the ratio of high compliance to medium compliance is running at 1.5:1 (cf 1.4:1 June 2009 & 10, 1.2:1 to June 2008) with low/non-compliance running at 7.5% (cf 7.8% June 2010, 7.3% June 2009, 3.8% to June 2008) of all audits. In the Bay of Plenty, the change in statistics has been most marked, reflecting the effort being applied to improved engineering. Those efforts continue to be transferred across the country.

Consent Compliance score ratios – Bay of Plenty

	High	Med	Low	NC
2006	29%	63%	8%	0%
2007	47%	50%	3%	0%
2008	47%	42%	12%	0%
2009	45%	36%	15%	4%
2010	67%	25%	6%	2%
2011	92%	8%	0%	0%

Resource Consents

PF Olsen West Coast Forests FSC SGS-FM/COC-000763

The West Coast forests operate under the consents as summarised below. All consents are managed through the PF Olsen Ltd systems and statistics will be gathered in the same fashion over time.

Over the last year two council inspections were undertaken both to high compliance.

Row Labels	Current	Due To Expire	Grand Total
Grey	1		1
Historic Places Trust	26	2	28
West Coast	63	1	64
Grand Total	90	3	93

Over the period since PF Olsen started management of the West Coast Forests, there has been a relatively low sample of external audits. The data as gathered is tabulated below to Y.E June 2011. The large number of European archaeological sites and their associated audits are a clear feature of these forests.

High	1	1	1	2	5
Med		1	3	1	5
Low					0
NC					0
	2009 WCRC	2010 WCRC	2009 HPT	2010 HPT	10