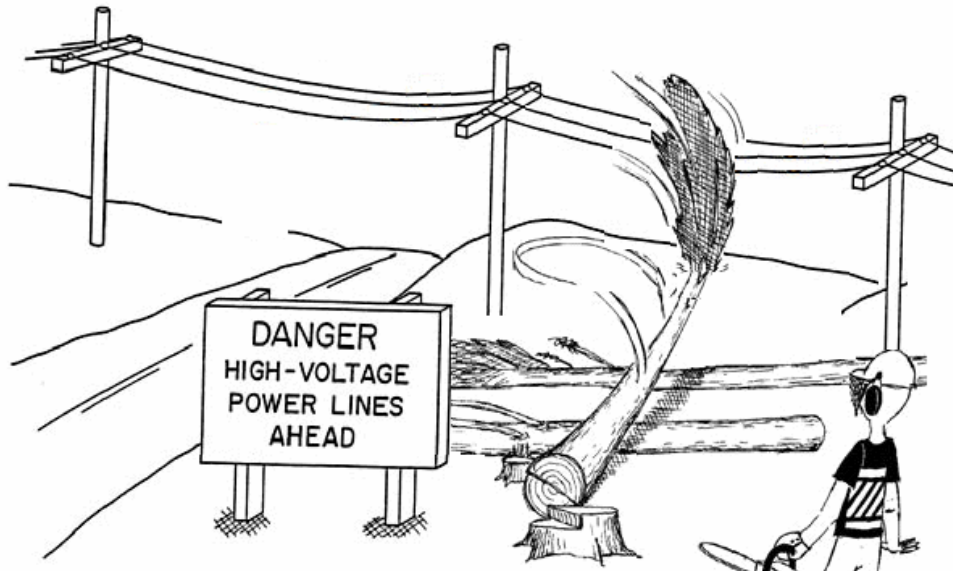


Tree Work Around Live Power Lines!



PF Olsen recorded ten separate line contacts, most involving felling within two tree-lengths of the lines, in the last two years. Fortunately, no one has been seriously injured – YET!

The Electricity Engineers Association (EEA) says ‘we have been extremely fortunate’ – not to have had injuries – ‘each year, contacts with live lines result in severe permanent injury (loss of limb function and/or neurological disorders) or death.’

What do we need to know?

- PF Olsen has http://www.pfolsen.com/nz/src/hsalert/060_CRule.pdf written guidelines for work around live power lines; these refer to two documents (1) The Approved Code of Practice for Safety in Tree Work Part 2: Maintenance Of Trees Around Power Lines, and (2) The ‘Draft’ BPG Forest and Woodlot Safety Management Around Power Lines.
- These guidelines shall be observed for [all work](#) around live lines!